

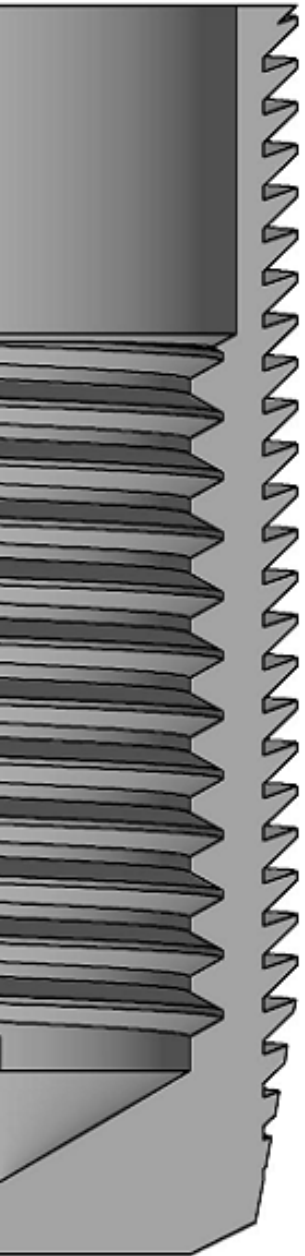


THREAD REPAIRS
STRONGER THAN
ORIGINAL!

Full-Torque[®]

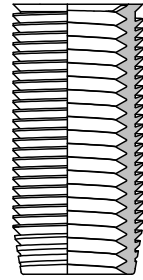
Full-Torque

The ultimate thread repair system



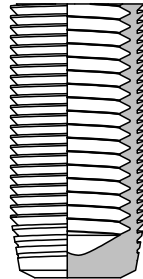
FFT

Most popular, lowest cost and easiest to install insert



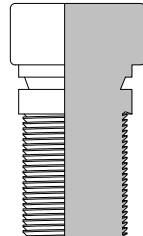
FFB

Inserts for air and liquid-tight bolt holes



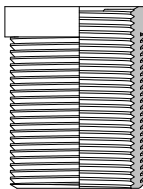
FPS

Solid plugs to fill mis-drilled holes



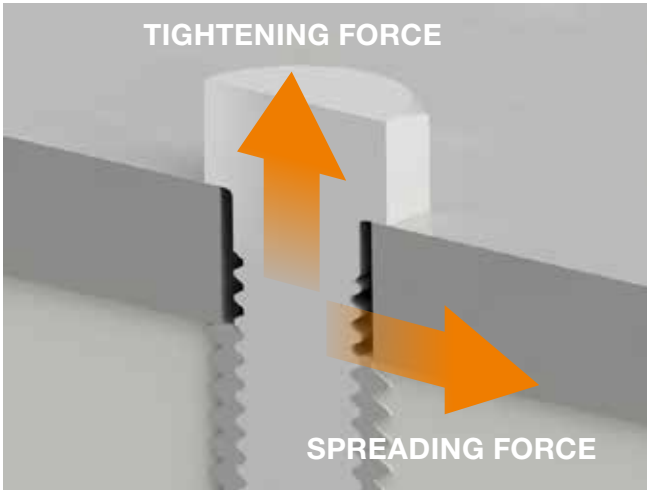
Special Applications

Inserts with shoulders, tapered threads, to repair spark plug threads, etc.

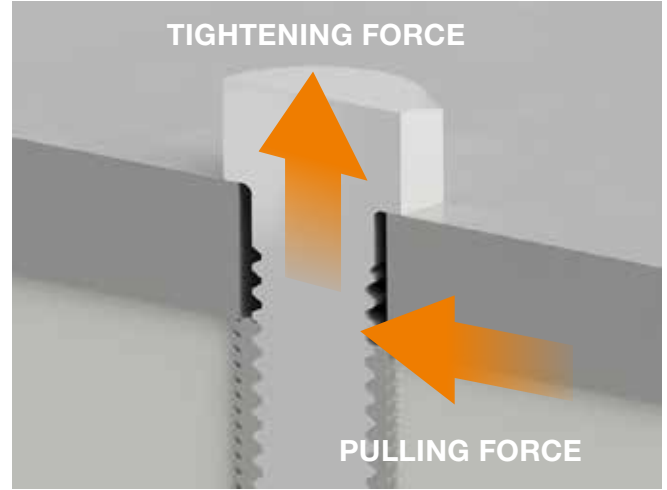


Customer Unique Solutions

The optimal solution to your problem



Standard thread insert



Full-Torque insert

Superior Design

The secret to the superior strength of the Full-Torque inserts lies in the design of their outer thread.

A standard bolt and thread insert with a metric or unified thread (UNC/UNF) has a thread angle of 60°. During tightening of the bolt, the insert is pulled upwards and slightly compressed. This results in an undesirable radial outward force on the surrounding material as the thread flank of the insert and the thread flank of the surrounding material are sliding off each other.

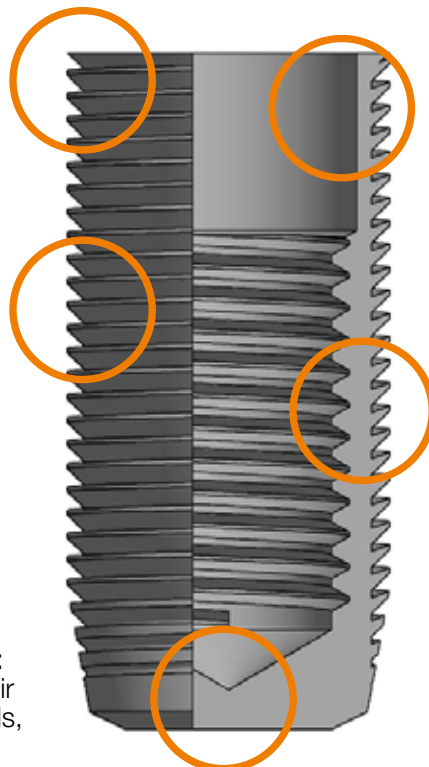
Full-torque inserts are different, they don't create a radial outward force. The patented Spiralhook outer thread on the Full-Torque insert pulls the surrounding material into the threads of the insert and adds strength to the part being repaired.

A Full-Torque insert thus makes the bolt hole stronger than the bolt.

Shoulder that keeps the insert firmly in place and provides for a beautiful finish, making the insert almost invisible

Spiral hook thread to eliminate radial spreading forces and to add strength to the part being repaired

Large variety of different designs available: To repair through threads, blind threads, spark plug holes, etc.



Available with **counter bore** or **collar**

Made from **very durable and tough materials** suitable for high-tensile bolts of classes 8.8, 10.9 and 12.9

Full-Torque®

Widely used and proven thread repair system

Over the years, Full-Torque inserts have been rigorously assessed and tested by some of the world's largest automotive and construction equipment OEMs, as well as by independent certification authorities.

For example a test carried out by RE Metrology on the wheel hub of a large mining truck investigated the spreading forces of different thread repair inserts. It clearly showed that the Full-Torque inserts exert much less force on the surrounding material than coiled inserts.

ATTRIBUTE	COIL STYLE	KEY-LOCKING	SELF-TAPPING	FULL-TORQUE
Repairs stripped threads	●	●	●	●
Emergency repair solution	●	●	●	●
Stays solidly in place				●
Does not create spreading force when installed				●
Placement close to an edge is not a problem				●
Contains the spreading force of the bolt				●
Multi-application tooling				●
Adds strength to the surrounding material				●
Solves the cause of cracked bolt holes				●
Allows multiple bolt torquing in aluminium	●	●	●	●
Prevents future failures				●
Repaired hole becomes stronger than bolt				●
Insert invisible as obvious repair				●
Creates pressure-tight seal on OD thread		●		●
Available in high-strength steel				●
Easy to install	●	●	●	●
Available as solid plug				●
Available with solid bottom				●
Available with a large shoulder				●



Using Full-Torque inserts

Full-Torque inserts are fast and easy to install adding strength to the repair immediately. They are most often used to repair stripped threads or to reinforce bolt holes that are loosened and re-torqued. Another common application is to use them to reinforce threads in soft materials such as cast iron, aluminium, zinc or magnesium.



Install the fixture and drill the hole larger. Be careful not to drill too deep.



Tap the thread, using the tap provided.



Screw the insert onto the installation tool and lightly coat the thread with thread locker. Screw the insert in the newly tapped hole.



Using the fixture and drill provided, drill a small hole to accommodate the locking pin.



Install the locking pin to prevent the insert from ever rotating.



The completed repair.

Full-Torque[®]

THREAD INSERTS

Our thread inserts are available in many different sizes and for many different applications. If you are looking for a style or size not listed in the catalogue then contact us about it. We are able to quickly custom produce any size and style with internal thread from M6 / 1/4" to M125 / 6". Full-Torque inserts are made of high-tensile steel. Heat treated variants are also available. Inserts with internal threads of M20 / 3/4" or larger are available individually. Smaller ones are available in packets of five.



BASIC KITS

Basic kits are ideal to repair one or more thread holes of the same size.

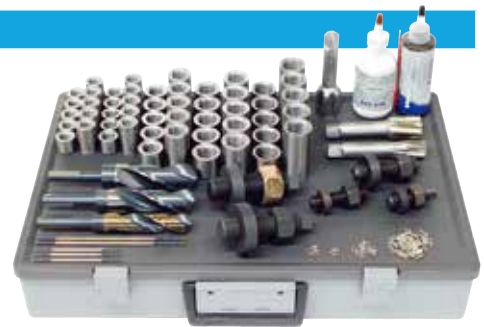
They contain:

- 5 inserts
- 5 locking pins
- Instructions
- Drill bit
- Roughing tap
- Finishing tap
- Installation tools
- Tapping fluid
- Thread locker fluid



COMBINATION KITS

Combination kits are ideal if you intend to repair threads of different sizes. Combination kits are available for metric and inch size threads. They contain various size inserts; each one in two lengths. All necessary drills, taps, installation tools, etc. are included as well.



Ordering of replacement parts

All items in this catalogue are available for re-ordering either individually or, in case of small items, in a package. If the part that you are looking for is not listed in this catalogue, then describe it to us and we will help you to identify it.

Field and workshop service

Don't feel confident to carry out the repair yourself? No problem at all! We can help you in two ways: You can either ship the part to our workshop in Turlock, California, or we can send an experienced technician to carry out the repair at your location.

Customer unique solutions

Over the years Lock-N-Stitch has entered into partnership agreements with some of the world's premier automotive, marine and construction equipment Original Equipment Manufacturers. Let us know your problem and unique requirements and we will find the optimal solution for you.

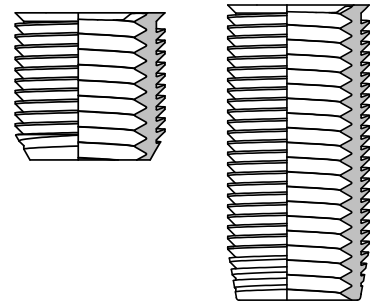
Combination kits

Our combination kits are available in metric and inch executions. They contain five inserts in various sizes and in two lengths each, plus all required installation tools such as taps, drills and fluids. Replacement parts and additional inserts are available individually.



METRIC FFT KITS – SUITABLE TO REPAIR THROUGH HOLES

METRIC	ORDER	KIT INCLUDES FIVE LONG AND FIVE SHORT INSERTS OF THESE SIZES:
M6 - M10	FFTC6M - 10MK	M6, M7, M8, M10
M6 - M14	FFTC6M - 14MK	M6, M7, M8, M10, M12, M14
M10 - M14	FFTC10M - 14MK	M10, M12, M14
M16 - M24	FFTC16M - 24MK	M16, M18, M20, M24
M6 - M24	FFTC6M - 24MK	M6, M7, M8, M10, M12, M14, M16, M18, M20, M24



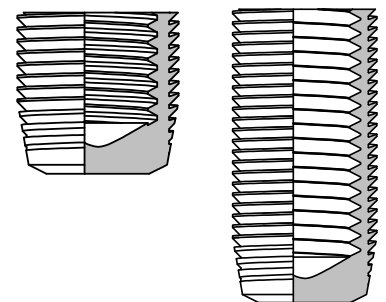
UNC FFT KITS – SUITABLE TO REPAIR THROUGH HOLES

UNC	ORDER	KIT INCLUDES FIVE LONG AND FIVE SHORT INSERTS OF THESE SIZES:
1/4 - 3/8	FFTC14-38K	1/4, 5/16 and 1/2
1/4 - 1/2	FFTC14-12K	1/4, 5/16, 3/8, 7/16 and 1/2
3/8 - 1/2	FFTC38-12K	3/8, 7/16 and 1/2
9/16 - 1	FFTC916-1K	9/16, 5/8, 3/4, 7/8 and 1-8
1/4 - 1	FFTC14-1K	1/4, 5/16, 3/8, 7/16, 1/2, 9/16, 5/8, 3/4, 7/8 and 1-8

Kits include five long and five short inserts

METRIC FFB KITS – SUITABLE TO REPAIR BLIND HOLES

METRIC	ORDER	KIT INCLUDES FIVE LONG AND FIVE SHORT INSERTS OF THESE SIZES:
M6 - M10	FFBC6M - 10MK	M6, M7, M8, M10
M6 - M14	FFBC6M - 14MK	M6, M7, M8, M10, M12, M14
M10 - M14	FFBC10M - 14MK	M10, M12, M14
M16 - M24	FFTB16M - 24MK	M16, M18, M20, M24
M6 - M24	FFTB6M - 24MK	M6, M7, M8, M10, M12, M14, M16, M18, M20, M24



UNC FFB KITS – SUITABLE TO REPAIR BLIND HOLES

UNC	ORDER	KIT INCLUDES FIVE LONG AND FIVE SHORT INSERTS OF THESE SIZES:
1/4 - 3/8	FFBC14 - 38K	1/4, 5/16 and 3/8
1/4 - 1/2	FFBC 14 - 12K	1/4, 5/16, 3/8, 7/16 and 1/2
3/8 - 1/2	FFBC38 - 12K	3/8, 7/16 and 1/2
9/16 - 1	FFBC916 - 1K	9/16, 5/8, 3/4, 7/8 and 1-8
1/4 - 1	FFBC14 - 1K	1/4, 5/16, 3/8, 7/16, 1/2, 9/16, 5/8, 3/4, and 1-8

Kits include five long and five short inserts

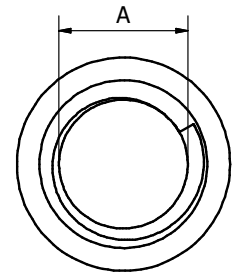
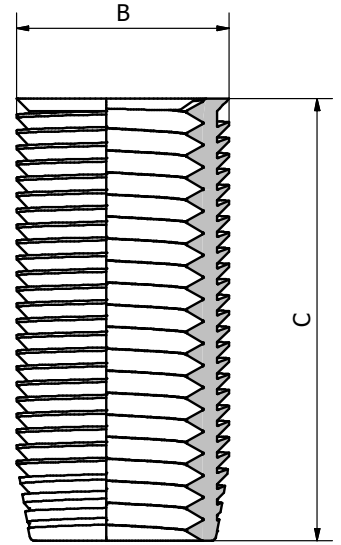


Full-Torque inserts for through holes

FFT inserts are our most popular, lowest cost and easiest to install. These inserts can be used for most common bolt hole repairs. They produce maximum strength, a flush surface finish and don't leave a visible thread line. They are available in metric and inch thread sizes, in both their standard and fine-thread variants.

FFT INSERTS FOR METRIC THREADS (DIMENSIONS IN MILLIMETERS)

A	B	C	BASIC KIT	FIVE ADDITIONAL INSERTS	INSTALLATION TOOL KIT
M6	8.84	8.00	FFT2S6100K	FFT2S6100-5	FP26100K
		15.00	FFT26100K	FFT26100-5	
M7	8.84	8.60	FFT2S7100K	FFT2S7100-5	FP27100K
		17.50	FFT27100K	FFT27100-5	
M8	11.80	10.20	FFT3S8125K	FFT3S8125-5	FP38125K
		19.80	FFT38125K	FFT38125-5	
M10	15.10	12.70	FFT4S10150K	FFT4S10150-5	FP410150K
		25.00	FFT410150K	FFT410150-5	
M11	15.10	12.70	FFT4S11150K	FFT4S11150-5	FP411150K
		25.00	FFT411150K	FFT411150-5	
M12	18.70	15.20	FFT5S12175K	FFT5S12175-5	FP512175K
		30.20	FFT512175K	FFT512175-5	
M14	18.70	15.24	FFT5S14200K	FFT5S14200-5	FP514200K
		28.45	FFT514200K	FFT514200-5	
M16	21.84	19.81	FFT6S16200K	FFT6S16200-5	FP616200K
		39.75	FFT616200K	FFT616200-5	
M18	24.64	22.50	FFT7S18250K	FFT7S18250-5	FP718250K
		45.00	FFT718250K	FFT718250-5	
M20	27.81	23.88	FFT8S20250K	FFT8S20250-5	FP820250K
		47.63	FFT820250K	FFT820250-5	
M24	31.00	30.48	FFT9S24300K	FFT9S24300-5	FP924300K
		60.33	FFT924300K	FFT924300-5	
M30	37.72	29.97	FFT11S30350K	FFT11S30350-5	FP1130350K
		59.94	FFT1130350K	FFT1130350-5	
M36	44.00	36.07	FFT13S36400K	FFT13S36400-5	FP1336400K
		71.88	FFT1336400K	FFT1336400-5	
M42	56.52	41.91	FFT15S42450K	FFT15S42450-5	FP1542450K
		84.07	FFT1542450K	FFT1542450-5	
M48	62.87	48.00	FFT16S48500K	FFT16S48500-5	FP1648500K
		96.00	FFT1648500K	FFT1648500-5	



All sizes listed on this page are standard stock items, yet subject to prior sale.

We are also able to quickly custom produce any other diameter or length.

FFT INSERTS FOR METRIC FINE THREADS (DIMENSIONS IN MILLIMETERS)

A	B	C	BASIC KIT	FIVE ADDITIONAL INSERTS	INSTALLATION TOOL KIT
M10 x 1.25	15.10	12.70	FFT4S10125K	FFT4S10125-5	FP410125K
		25.00	FFT410125K	FFT410125-5	
M11 x 1.25	15.10	12.70	FFT4S11125K	FFT4S11125-5	FP411125K
		25.00	FFT411125K	FFT411125-5	
M12 x 1.25	16.30	15.20	FFT4.5S12125K	FFT4.5S12125-5	FP4.512125K
		30.20	FFT4.512125K	FFT4.512125-5	

FFT INSERTS FOR UNC THREADS (DIMENSIONS IN INCHES)

A	B	C	BASIC KIT	FIVE ADDITIONAL INSERTS	INSTALLATION TOOL KIT
1/4 - 20	0.348	0.315	FFT2S1420K	FFT2S1420-5	FP21420K
		0.630	FFT21420K	FFT21420-5	
5/16 - 18	0.465	0.400	FFT3S51618K	FFT3S51618-5	FP351618K
		0.780	FFT351618K	FFT351618-5	
3/8 - 16	0.595	0.470	FFT4S3816K	FFT4S3816-5	FP43816K
		0.935	FFT43816K	FFT43816-5	
7/16 - 14	0.595	0.625	FFT4S71614K	FFT4S71614-5	FP471614K
		1.100	FFT471614K	FFT471614-5	
1/2 - 13	0.735	0.750	FFT5S1213K	FFT5S1213-5	FP51213K
		1.500	FFT51213K	FFT51213-5	
9/16 - 12	0.860	0.750	FFT6S91612K	FFT6S91612-5	FP691612K
		1.410	FFT691612K	FFT691612-5	
5/8 - 11	0.860	0.780	FFT6S5811K	FFT6S5811-5	FP65811K
		1.560	FFT65811K	FFT65811-5	
3/4 - 10	1.095	0.94	FFT8S3410K	FFT8S3410-5	FP83410K
		1.875	FFT83410K	FFT83410-5	
7/8 - 9	1.220	1.100	FFT9S7809K	FFT9S7809-5	FP97809K
		1.750	FFT97809K	FFT97809-5	
1 - 8	1.220	1.125	FFT9S1008K	FFT9S1008-5	FP91008K
		2.500	FFT91008K	FFT91008-5	
1 1/8 - 7	1.364	1.125	FFT10S1187K	FFT10S118-5	FP101187K
		2.250	FFT101187K	FFT101187-5	
1 1/4 - 7	1.610	1.250	FFT12S1147K	FFT12S1147-5	FP121147K
		2.500	FFT121147K	FFT121147-5	
1 3/8 - 6	1.732	1.375	FFT13S1386K	FFT13S1386-5	FP131386K
		2.750	FFT131386K	FFT131386-5	
1 1/2 - 6	1.975	1.500	FFT14S1126K	FFT14S1126-5	FP141126K
		3.000	FFT141126K	FFT141126-5	
1 3/4 - 5	2.225	1.750	FFT15S1345K	FFT15S1345-5	FP151345K
		3.500	FFT151345K	FFT151345-5	
2 - 4 1/2	2.475	2.000	FFT16S2412K	FFT16S2412-5	FP162412K
		4.000	FFT162412K	FFT162412-5	

FFT INSERTS FOR UNF THREADS (DIMENSIONS IN INCHES)

A	B	C	BASIC KIT	FIVE ADDITIONAL INSERTS	INSTALLATION TOOL KIT
1/4 - 28	0.348	0.315	FFT2S1428K	FFT2S1428-5	FP21428K
		0.630	FFT21428K	FFT21428-5	
5/16 - 24	0.465	0.400	FFT3S51624K	FFT3S51624-5	FP351624K
		0.780	FFT351624K	FFT351624-5	
3/8 - 24	0.595	0.470	FFT4S3824K	FFT4S3824-5	FP43824K
		0.935	FFT43824K	FFT43824-5	
7/16 - 20	0.595	0.625	FFT4S71620K	FFT4S71620-5	FP471620K
		1.100	FFT471620K	FFT471620-5	
1/2 - 20	0.735	0.750	FFT5S1220K	FFT5S1220-5	FP51220K
		1.500	FFT51220K	FFT51220-5	
9/16 - 18	0.860	0.750	FFT6S91618K	FFT6S91618-5	FP691618K
		1.410	FFT691618K	FFT691618-5	
5/8 - 18	0.860	0.780	FFT6S5818K	FFT6S5818-5	FP65818K
		1.560	FFT65818K	FFT65818-5	
3/4 - 16	1.095	0.940	FFT8S3416K	FFT8S3416-5	FP83416K
		1.875	FFT83416K	FFT83416-5	
7/8 - 14	1.220	1.100	FFT9S7814K	FFT9S7814-5	FP97814K
		1.750	FFT97814K	FFT97814-5	
1 - 14	1.220	1.125	FFT9S1014K	FFT9S1014-5	FP91014K
		2.000	FFT91014K	FFT91014-5	
1 - 12	1.220	1.250	FFT9S1012K	FFT9S1012-5	FP91012K
		2.500	FFT91012K	FFT91012-5	



Counter-sunk inserts for through holes

FFT inserts are also available in counter-sunk execution. They are usually made to match the exact geometry of various applications. Besides being counter-sunk, they are usually made to a specific length.

FFT COUNTER-SUNK INSERTS FOR METRIC THREADS

(DIMENSIONS IN MILLIMETERS)

A	B	C	D	BASIC KIT	FIVE ADDITIONAL INSERTS	INSTALLATION TOOL KIT
M10	15.10	35.56	8.20	FFT4SP004K	FFT4SP004-5	FP4SP005K
	15.10	40.00	12.70	FFT4SP005K	FFT4SP005-5	FP4SP005K
M12	18.67	28.58	8.20	FFT5SP001K	FFT5SP001-5	FP5SP005K
	18.67	40.64	6.35	FFT5SP003K	FFT5SP003-5	FP5SP005K
	18.67	52.07	19.05	FFT5SP005K	FFT5SP005-5	FP5SP005K
	21.84	25.40	8.20	FFT6SP002K	FFT6SP002-5	FP6SP011K
M14	18.67	36.07	5.33	FFT5SP007K	FFT5SP007-5	FP5SP006K
	18.67	48.26	17.27	FFT5SP008K	FFT5SP008-5	FP5SP006K

FFT COUNTER-SUNK INSERTS FOR UNC THREADS

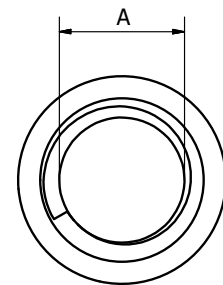
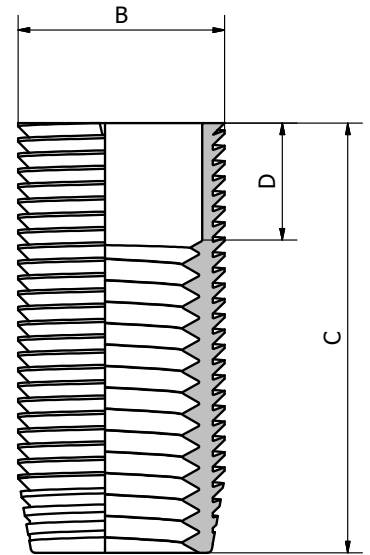
(DIMENSIONS IN INCHES)

A	B	C	D	BASIC KIT	FIVE ADDITIONAL INSERTS	INSTALLATION TOOL KIT
$\frac{3}{8}$ - 16	0.595	1.370	0.300	FFT4SP007K	FFT4SP007-5	FP43816K
$\frac{7}{16}$ - 14	0.595	1.053	0.225	FFT4SP003K	FFT4SP003-5	FP4SP004K
	0.595	1.655	0.815	FFT4SP001K	FFT4SP001-5	FP4SP004K
$\frac{1}{2}$ - 13	0.735	1.438	0.250	FFT5SP006K	FFT5SP006-5	FP5SP007K
$\frac{9}{16}$ - 12	0.860	2.550	0.775	FFT6SP004K	FFT6SP004-5	FP6SP007K

FFT COUNTER-SUNK INSERTS FOR UNF THREADS

(DIMENSIONS IN INCHES)

A	B	B	D	BASIC KIT	FIVE ADDITIONAL INSERTS	INSTALLATION TOOL KIT
$\frac{9}{16}$ - 18	0.735	2.375	0.375	FFT5SP002K	FFT5SP002-5	FP5SP004K
$\frac{5}{8}$ - 18	0.860	2.125	0.625	FFT6SP001K	FFT6SP001-5	FP6SP006K
$\frac{7}{8}$ - 14	1.220	3.250	0.900	FFT9SP003K	FFT9SP003-5	FP9SP001K
	1.220	3.875	1.437	FFT9SP002K	FFT9SP002-5	FP9SP001K



All sizes listed on this page are standard stock items, yet subject to prior sale.

We are also able to quickly custom produce any other diameter or length.

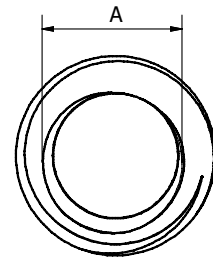
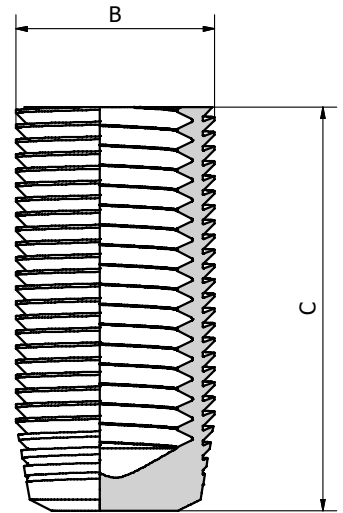
FFB

Full-Torque inserts for blind holes

FFB inserts have a solid, or “blind” bottom. They are liquid- and airtight up to 69 MPa (10,000 Psi) and are used in applications where bolt holes are reaching into, or are close to, pressurized cavities such as cooling water spaces.

FFB INSERTS FOR METRIC THREADS (DIMENSIONS IN MILLIMETERS)

A	B	C	BASIC KIT	FIVE ADDITIONAL INSERTS	INSTALLATION TOOL KIT
M6	8.84	19.40	FFB26100K	FFB26100-5	FFP26100K
M7	8.84	21.84	FFB27100K	FFB27100-5	FFP27100K
M8	11.81	28.07	FFB38125K	FFB38125-5	FFP38125K
M10	15.11	27.60	FFB410150K	FFB410150-5	FFP410150K
M11	15.11	33.78	FFB411150K	FFB411150-5	FFP411150K
M12	18.70	36.83	FFB512175K	FFB512175-5	FFP512175K
M14	18.70	44.45	FFB514200K	FFB514200-5	FFP514200K
M16	21.84	47.50	FFB616200K	FFB616200-5	FFP616200K
M18	24.64	57.40	FFB718250K	FFB718250-5	FFP718250K
M20	27.81	59.94	FFB820250K	FFB820250-5	FFP820250K
M24	30.98	73.15	FFB924300K	FFB924300-5	FFP924300K
M30	37.72	77.98	FFB1130350K	FFB1130350-5	FFP1130350K
M36	43.99	91.95	FFB1336400K	FFB1336400-5	FFP1336400K
M42	56.51	105.92	FFB1542450K	FFB1542450-5	FFP1542450K
M48	62.86	119.98	FFB1648500K	FFB1648500-5	FFP1648500K



FFB INSERTS FOR UNC THREADS (DIMENSIONS IN INCHES)

A	B	C	BASIC KIT	ADDITIONAL FIVE INSERTS	INSTALLATION TOOL KIT
¼ - 20	0.348	0.800	FFB21420K	FFB21420-5	FFP21420K
⅝ - 18	0.465	1.105	FFB351618K	FFB351618-5	FFP351618K
¾ - 16	0.595	1.200	FFB43816K	FFB43816-5	FFP43816K
7/16 - 14	0.595	1.330	FFB471614K	FFB471614-5	FFP471614K
½ - 13	0.735	1.500	FFB51213K	FFB51213-5	FFP51213K
9/16 - 12	0.860	1.750	FFB691612K	FFB691612-5	FFP691612K
5/8 - 11	0.860	1.900	FFB65811K	FFB65811-5	FFP65811K
¾ - 10	1.095	2.275	FFB83410K	FFB83410-5	FFP83410K
7/8 - 9	1.220	2.500	FFB97809K	FFB97809-5	FFP97809K
1 - 8	1.220	2.880	FFB91008K	FFB91008-5	FFP91008K
1 1/8 - 7	1.364	2.980	FFB101187K	FFB101187-5	FFP101187K
1 1/4 - 7	1.610	3.230	FFB121147K	FFB121147-5	FFP121147K
1 3/8 - 6	1.732	3.570	FFB131386K	FFB131386-5	FFP131386K
1 1/2 - 6	1.975	3.820	FFB141126K	FFB141126-5	FFP141126K
1 3/4 - 5	2.225	4.450	FFB151345K	FFB151345-5	FFP151345K
2 - 4 1/2	2.475	5.050	FFB162412K	FFB162412-5	FFP162412K

FFB INSERTS FOR UNF THREADS (DIMENSIONS IN INCHES)

A	B	C	BASIC KIT	FIVE ADDITIONAL INSERTS	INSTALLATION TOOL KIT
¼ - 28	0.348	0.800	FFB21428K	FFB21428-5	FFP21428K
⅝ - 24	0.465	1.105	FFB351624K	FFB351624-5	FFP351624K
¾ - 24	0.595	1.200	FFB43824K	FFB43824-5	FFP43824K
7/16 - 20	0.595	1.330	FFB471620K	FFB471620-5	FFP471620K
½ - 20	0.735	1.500	FFB51220K	FFB51220-5	FFP51220K
9/16 - 18	0.860	1.650	FFB691618K	FFB691618-5	FFP691618K
5/8 - 18	0.860	1.900	FFB65818K	FFB65818-5	FFP65818K
¾ - 16	1.095	2.130	FFB83416K	FFB83416-5	FFP83416K
7/8 - 14	1.220	2.500	FFB97814K	FFB97814-5	FFP97814K
1 - 14	1.220	2.880	FFB91014K	FFB91014-5	FFP91014K

All sizes listed on this page are standard stock items, yet subject to prior sale.

We are also able to quickly custom produce any other diameter or length.

Full-Torque®



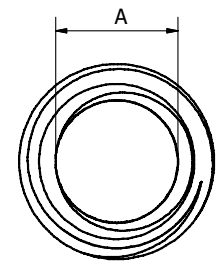
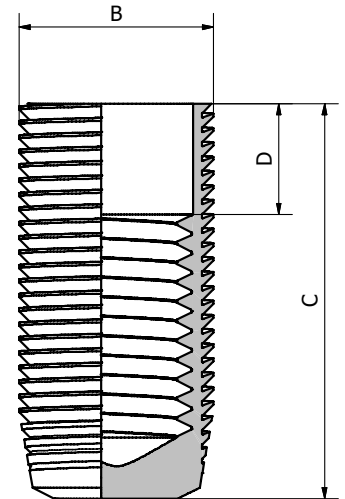
Counter-sunk inserts for blind holes

FFB counter-sunk inserts are made to match the exact geometry of various applications. Besides being counter-sunk, they are usually made to a specific length.

FFB COUNTER-SUNK INSERTS FOR METRIC THREADS

(DIMENSIONS IN MILLIMETERS)

A	B	C	D	BASIC KIT	FIVE ADDITIONAL INSERTS	INSTALLATION TOOL KIT
M10	15.10	41.91	6.99	FFB4SP002K	FFB4SP002-5	FP4SP005K
M12	18.70	50.04	6.48	FFB5SP008K	FFB5SP008-5	FP5SP005K
	18.70	58.93	6.48	FFB5SP008K	FFB5SP008-5	FP5SP005K
M14	18.70	65.91	13.34	FFB5SP003K	FFB5SP003-5	FP5SP006K
M16	21.84	47.00	8.89	FFB6SP003K	FFB6SP003-5	FP6SP009K
	21.84	76.20	29.21	FFB6SP002K	FFB6SP002-5	FP6SP009K
M20	24.64	74.30	22.61	FFB7SP005K	FFB7SP005-5	FP7SP004K



FFB COUNTER-SUNK INSERTS FOR METRIC FINE THREADS

(DIMENSIONS IN MILLIMETERS)

A	B	C	D	BASIC KIT	FIVE ADDITIONAL INSERTS	INSTALLATION TOOL KIT
M12 x 1.50	18.67	39.24	7.00	FFB5SP005K	FFB5SP005-5	FP5SP009K
M14 x 1.50	18.67	54.61	12.70	FFB5SP002K	FFB5SP002-5	FP5SP002K
M16 x 1.50	21.84	95.25	44.88	FFB6SP010K	FFB6SP010-5	FP6SP010K

FFT COUNTER-SUNK INSERTS FOR UNC THREADS

(DIMENSIONS IN INCHES)

A	B	C	D	BASIC KIT	FIVE ADDITIONAL INSERTS	INSTALLATION TOOL KIT
7/16 - 14	0.595	2.450	0.500	FFB4SP003K	FFB4SP003-5	FP4SP004K
1/2 - 13	0.735	2.020	0.350	FFB5SP006K	FFB5SP006-5	FP5SP007K
	0.735	2.057	0.475	FFB5SP001K	FFB5SP001-5	FP5SP007K
9/16 - 12	0.860	2.150	0.188	FFB6SP005K	FFB6SP005-5	FP6SP007K
	0.860	2.000	0.210	FFB6SP006K	FFB6SP006-5	FP6SP007K
	0.860	3.000	0.820	FFB6SP014K	FFB6SP014-5	FP6SP007K
5/8 - 11	0.860	2.000	0.400	FFB6SP001K	FFB6SP001-5	FP6SP008K
	0.860	2.415	0.240	FFB6SP007K	FFB6SP007-5	FP6SP008K
	0.860	2.900	0.230	FFB6SP008K	FFB6SP008-5	FP6SP008K
	0.860	2.900	0.500	FFB6SP009K	FFB6SP009-5	FP6SP008K
	0.860	3.000	0.750	FFB6SP004K	FFB6SP004-5	FP6SP008K
3/4 - 10	1.095	4.150	1.500	FFB8SP006K	FFB8SP006-5	FP8SP001K
	1.095	4.290	2.000	FFB8SP005K	FFB8SP005-5	FP8SP001K

FFT COUNTER-SUNK INSERTS FOR UNF THREADS

(DIMENSIONS IN INCHES)

A	B	C	D	BASIC KIT	FIVE ADDITIONAL INSERTS	INSTALLATION TOOL KIT
1 1/16 - 12	0.970	2.500	0.800	FFB7SP002K	FFB7SP002-5	FP7SP005K
	0.970	2.500	1.000	FFB7SP001K	FFB7SP001-5	FP7SP005K
3/4 - 16	0.970	3.500	1.000	FFB7SP004K	FFB7SP004-5	FP5SP003K
	0.970	3.750	1.940	FFB5SP003K	FFB7SP003-5	FP5SP003K
	0.970	1.095	3.080	FFB8SP007K	FFB8SP007-5	FP8SP004K
	0.970	1.095	3.940	FFB5SP001K	FFB8SP001-5	FP8SP004K

All sizes listed on this page are standard stock items, yet subject to prior sale.

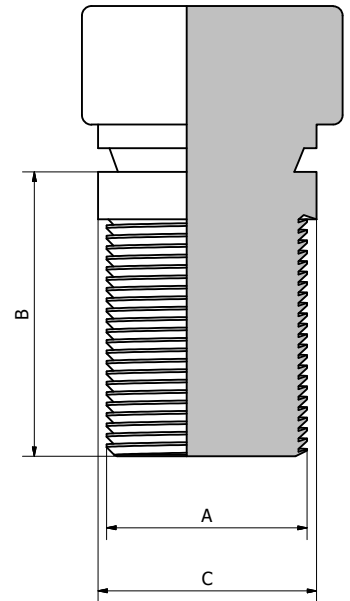
We are also able to quickly custom produce any other diameter or length.

FPS

Full-Torque solid plugs (DIMENSIONS IN INCHES)

Solid plugs are used for filling holes and to repair badly damaged or miss-drilled holes. Their head snaps off at a predetermined torque to create a pressure-tight fit.

A	B	C	BASIC KIT	FIVE ADDITIONAL PLUGS
0.348	0.525	0.450	FPS20375K	FPS20375-5
	0.850	0.450	FPS20700K	FPS20700-5
0.465	0.575	0.600	FPS30400K	FPS30400-5
	0.975	0.600	FPS30800K	FPS30800-5
0.595	0.750	0.731	FPS40500K	FPS40500-5
	1.450	0.731	FPS41200K	FPS41200-5
0.735	0.620	0.852	FPS50470K	FPS50470-5
	0.975	0.852	FPS50600K	FPS50600-5
	1.875	0.852	FPS51500K	FPS51500-5
	2.875	0.852	FPS52500K	FPS52500-5
0.860	1.325	0.991	FPS61000K	FPS61000-5
	2.325	0.991	FPS62000K	FPS62000-5
0.970	1.100	1.168	FPS70800K	FPS70800-5
	1.550	1.168	FPS71250K	FPS71250-5
	2.550	1.168	FPS72250K	FPS72250-5
1.095	0.700	1.229	FPS80500K	FPS80500-5
	1.875	1.229	FPS81500K	FPS81500-5
	2.375	1.229	FPS82000K	FPS82000-5
1.220	0.750	1.355	FPS90500K	FPS90500-5
	1.000	1.355	FPS90750K	FPS90750-5
	1.875	1.355	FPS91500K	FPS91500-5
1.364	1.250	1.565	FPS100900K	FPS100900-5
	2.500	1.565	FPS102150K	FPS102150-5
1.485	1.375	1.690	FPS111000K	FPS111000-5
	2.750	1.690	FPS112375K	FPS112375-5
1.610	1.500	1.835	FPS121100K	FPS121100-5
	3.000	1.835	FPS122600K	FPS122600-5
1.732	1.625	1.975	FPS131200K	FPS131200-5
	3.375	1.975	FPS132950K	FPS132950-5
1.975	1.750	2.260	FPS141300K	FPS141300-5
	3.750	2.260	FPS143300K	FPS143300-5
2.225	2.000	2.550	FPS151525K	FPS151525-5
	4.250	2.550	FPS153775K	FPS153775-5
2.475	2.375	2.830	FPS161875K	FPS161875-5
	5.000	2.830	FPS164500K	FPS164500-5



Special application inserts

In addition to the Full-Torque products presented in this catalogue, we manufacture many more types for various applications:

- Inserts with shoulders, for through and blind holes
- Inserts with tapered external threads
- Pre-drilled solid plugs

Let us know your problem and unique requirements and we will find the optimal solution for you. For automotive applications such as stripped spark plug threads, refer to our specialized automotive catalogue, available in print and available for download at www.locknstitch.com

Crack repairs

Lock-N-Stitch also manufactures many other tools and supplies to carry out crack repairs on cast iron, steel and aluminium castings.



Castmaster™ stitching pins that do not spread a crack but pull the surrounding material together.



Locks made of high-tensile steel to add further strength across a crack that has been stitched

When performance matters

The extensive range of Full-Torque thread inserts, taps, drills and installation tools are developed, designed and manufactured in-house at our modern facility in California, USA, since 1985. Since then, they have become known as the strongest thread repair system there is and have been used extensively by OEMs, remanufacturers, service companies and repair workshops all over the world.



All information given in this catalogue is accurate at the time of printing. We reserve the right to make technical changes without prior notice. © Copyright 2018 Lock-N-Stitch Inc. Lock-N-Stitch and Full-Torque are trademarks owned by Lock-N-Stitch Inc. All rights reserved. Full-Torque products are protected by various US American and international patents.



Full-Torque®

GLOBAL PRESENCE

15 locations

Lock-N-Stitch Inc.
1015 Soderquist Road
Turlock CA 95380, USA
(+1) 209 632 2345
info@locknstitch.com

